



Title Plan - LT 542496

Survey Number LT 542496
Surveyor Reference 37505 Arran Hill Precinct 5 Stage 5
Surveyor Kendall Lisa Reid
Survey Firm Wood & Partners Consultants Ltd
Surveyor Declaration

Survey Details

Dataset Description Lots 54-78, 174-195, 604-605, 802-803, 904 & 1001 Being a Subdivision of Lot 1001 DP 534851
Status Initiated
Land District North Auckland
Submitted Date
Survey Class Class A
Survey Approval Date
Deposit Date

Territorial Authorities

Auckland Council

Comprised In

RT 895521

Created Parcels

Parcels	Parcel Intent	Area	RT Reference
Lot 904 Deposited Plan 542496	Vesting on Deposit for Road	0.6323 Ha	
Lot 604 Deposited Plan 542496	Fee Simple Title	0.0427 Ha	Multiple
Lot 605 Deposited Plan 542496	Fee Simple Title	0.0460 Ha	Multiple
Lot 803 Deposited Plan 542496	Vesting on Deposit for Recreation Reserve (Territorial Authority)	0.2999 Ha	917144
Lot 802 Deposited Plan 542496	Vesting on Deposit for Accessway	0.0413 Ha	917145
Lot 54 Deposited Plan 542496	Fee Simple Title	0.0651 Ha	917146
Lot 55 Deposited Plan 542496	Fee Simple Title	0.0759 Ha	917147
Lot 56 Deposited Plan 542496	Fee Simple Title	0.0736 Ha	917148
Lot 57 Deposited Plan 542496	Fee Simple Title	0.0600 Ha	917149
Lot 58 Deposited Plan 542496	Fee Simple Title	0.1426 Ha	917150
Lot 59 Deposited Plan 542496	Fee Simple Title	0.0455 Ha	917151
Lot 60 Deposited Plan 542496	Fee Simple Title	0.0527 Ha	917152
Lot 61 Deposited Plan 542496	Fee Simple Title	0.0519 Ha	917153
Lot 62 Deposited Plan 542496	Fee Simple Title	0.0638 Ha	917154
Lot 63 Deposited Plan 542496	Fee Simple Title	0.1148 Ha	917155
Lot 64 Deposited Plan 542496	Fee Simple Title	0.1059 Ha	917156
Lot 65 Deposited Plan 542496	Fee Simple Title	0.1045 Ha	917157
Lot 66 Deposited Plan 542496	Fee Simple Title	0.0652 Ha	917158
Lot 67 Deposited Plan 542496	Fee Simple Title	0.0666 Ha	917159
Lot 68 Deposited Plan 542496	Fee Simple Title	0.0536 Ha	917160

Title Plan - LT 542496

Created Parcels

Parcels	Parcel Intent	Area	RT Reference
Lot 69 Deposited Plan 542496	Fee Simple Title	0.0673 Ha	917161
Lot 70 Deposited Plan 542496	Fee Simple Title	0.0523 Ha	917162
Lot 71 Deposited Plan 542496	Fee Simple Title	0.0524 Ha	917163
Lot 72 Deposited Plan 542496	Fee Simple Title	0.0531 Ha	917164
Lot 73 Deposited Plan 542496	Fee Simple Title	0.0679 Ha	917165
Lot 74 Deposited Plan 542496	Fee Simple Title	0.0686 Ha	917166
Lot 75 Deposited Plan 542496	Fee Simple Title	0.0538 Ha	917167
Lot 76 Deposited Plan 542496	Fee Simple Title	0.0524 Ha	917168
Lot 77 Deposited Plan 542496	Fee Simple Title	0.0522 Ha	917169
Lot 78 Deposited Plan 542496	Fee Simple Title	0.0520 Ha	917170
Lot 174 Deposited Plan 542496	Fee Simple Title	0.0650 Ha	917171
Lot 175 Deposited Plan 542496	Fee Simple Title	0.0499 Ha	917172
Lot 176 Deposited Plan 542496	Fee Simple Title	0.0499 Ha	917173
Lot 177 Deposited Plan 542496	Fee Simple Title	0.0499 Ha	917174
Lot 178 Deposited Plan 542496	Fee Simple Title	0.0499 Ha	917175
Lot 179 Deposited Plan 542496	Fee Simple Title	0.0499 Ha	917176
Lot 180 Deposited Plan 542496	Fee Simple Title	0.0499 Ha	917177
Lot 181 Deposited Plan 542496	Fee Simple Title	0.0651 Ha	917178
Lot 182 Deposited Plan 542496	Fee Simple Title	0.0650 Ha	917179
Lot 183 Deposited Plan 542496	Fee Simple Title	0.0500 Ha	917180
Lot 184 Deposited Plan 542496	Fee Simple Title	0.0500 Ha	917181
Lot 185 Deposited Plan 542496	Fee Simple Title	0.0450 Ha	917182
Lot 186 Deposited Plan 542496	Fee Simple Title	0.0453 Ha	917183
Lot 187 Deposited Plan 542496	Fee Simple Title	0.0450 Ha	917184
Lot 188 Deposited Plan 542496	Fee Simple Title	0.0457 Ha	917185
Lot 189 Deposited Plan 542496	Fee Simple Title	0.0508 Ha	917186
Lot 190 Deposited Plan 542496	Fee Simple Title	0.0526 Ha	917187
Lot 191 Deposited Plan 542496	Fee Simple Title	0.0476 Ha	917188
Lot 192 Deposited Plan 542496	Fee Simple Title	0.0651 Ha	917189
Lot 193 Deposited Plan 542496	Fee Simple Title	0.0504 Ha	917190
Lot 194 Deposited Plan 542496	Fee Simple Title	0.0504 Ha	917191
Lot 195 Deposited Plan 542496	Fee Simple Title	0.0650 Ha	917192
Area HA Deposited Plan 542496	Covenant - Land		
Area HB Deposited Plan 542496	Covenant - Land		
Area HC Deposited Plan 542496	Covenant - Land		
Area HD Deposited Plan 542496	Covenant - Land		
Area HE Deposited Plan 542496	Covenant - Land		
Area HF Deposited Plan 542496	Covenant - Land		
Area HG Deposited Plan 542496	Covenant - Land		
Area HH Deposited Plan 542496	Covenant - Land		
Area HI Deposited Plan 542496	Covenant - Land		
Area HJ Deposited Plan 542496	Covenant - Land		
Area HK Deposited Plan 542496	Covenant - Land		
Area HL Deposited Plan 542496	Covenant - Land		

Title Plan - LT 542496

Created Parcels

Parcels	Parcel Intent	Area	RT Reference
Area HM Deposited Plan 542496	Covenant - Land		
Area HN Deposited Plan 542496	Covenant - Land		
Area HO Deposited Plan 542496	Covenant - Land		
Area HP Deposited Plan 542496	Covenant - Land		
Area DY Deposited Plan 542496	Covenant - Land		
Area DZ Deposited Plan 542496	Covenant - Land		
Area EA Deposited Plan 542496	Covenant - Land		
Area EB Deposited Plan 542496	Covenant - Land		
Area EC Deposited Plan 542496	Covenant - Land		
Area ED Deposited Plan 542496	Covenant - Land		
Area EE Deposited Plan 542496	Covenant - Land		
Area EF Deposited Plan 542496	Covenant - Land		
Area AR Deposited Plan 542496	Covenant - Land		
Area AS Deposited Plan 542496	Covenant - Land		
Area AT Deposited Plan 542496	Covenant - Land		
Area AU Deposited Plan 542496	Covenant - Land		
Area AV Deposited Plan 542496	Covenant - Land		
Area AW Deposited Plan 542496	Covenant - Land		
Area AX Deposited Plan 542496	Covenant - Land		
Area AY Deposited Plan 542496	Covenant - Land		
Lot 1001 Deposited Plan 542496	Fee Simple Title	6.4747 Ha	917193
Marginal Strip HH Deposited Plan 542496	Marginal Strip - Movable		
Marginal Strip II Deposited Plan 542496	Marginal Strip - Movable		
Total Area		<u>10.4080 Ha</u>	

Schedule / Memorandum

Land Registration District

North Auckland

Survey Number

LT 542496

Territorial Authority (the Council)

Auckland Council

Schedule of Easements in Gross

Last Edited: 31 Oct 2019 15:21:34

<u>Purpose</u>	<u>Shown</u>	<u>Servient Tenement (Burdened Land)</u>	<u>Grantee</u>
Right to convey telecommunications, computer	Lot 604	Lot 604	Chorus New Zealand Limited
	Lot 605	Lot 605	Chorus New Zealand Limited
Right to convey electricity, gas	Lot 604	Lot 604	Vector New Zealand Limited
	Lot 605	Lot 605	Vector New Zealand Limited

Amalgamation Conditions

Last Edited: 06 Nov 2019 11:46:23

THAT LOT 604 HEREON (LEGAL ACCESS) BE HELD AS TO 4 UNDIVIDED ONE-QUARTER SHARES BY THE OWNERS OF LOTS 192-195 AS TENANTS IN COMMON IN THE SAID SHARES AND THAT INDIVIDUAL COMPUTER REGISTERS BE ISSUED IN ACCORDANCE HEREWITH.

THAT LOT 605 HEREON (LEGAL ACCESS) BE HELD AS TO 7 UNDIVIDED ONE-SEVENTH SHARES BY THE OWNERS OF LOTS 61-67 AS TENANTS IN COMMON IN THE SAID SHARES AND THAT INDIVIDUAL COMPUTER REGISTERS BE ISSUED IN ACCORDANCE HEREWITH.

Notes

Last Edited: 29 Oct 2019 15:23:49

All lots are subject to Part IVA Conservation Act 1987 (affects land formerly Sections 7, 8 & 9 SO 70137)

Notes

Last Edited: 29 Oct 2019 15:27:31

Land Covenants:

Areas HA to HP are subject to Land Covenants.

Areas HI to HP, DY to DZ and EA to EF are subject to Land Covenants.

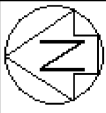
Areas HA to HH and AR to AY are subject to Land Covenants.

Notes

Last Edited: 29 Oct 2019 15:28:33

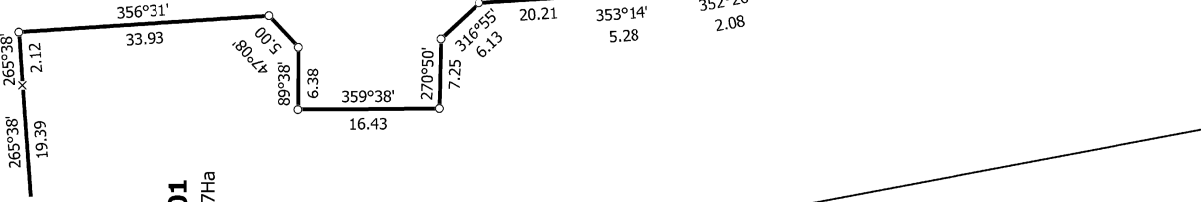
Moveable Marginal Strips:

Moveable Marginal Strips HH & II are existing Moveable Strips previously shown as Areas HH & II DP 534851.



Diag. AE

GROVER STREET



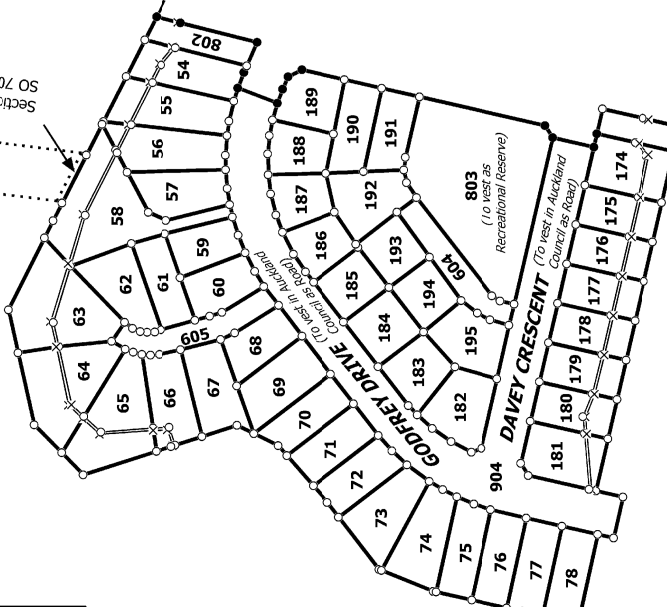
1001
6.4747Ha

Diag. A

Grand Drive

Diag. AB
See 12

Section 28
SO 70137



1001
6.4747Ha

State Highway 1

State Highway 1



Marginal Strip II

Marginal Strip HH

Orewa River
Generally 2-5m Wide

Lot 2 DP 311431

Lot 2 DP 197353

Land District: North Auckland

Digitally Generated Plan

Generated on: 08/11/2019 10:11 am Page 5 of 15

Lots 54-78, 174-195, 604-605, 802-803, 904 & 1001 Being a Subdivision of Lot 1001 DP 534851

Surveyor: Kendall Lisa Reid
Firm: Wood & Partners Consultants Ltd

Title Plan
LT 542496
DRAFT

All lots are subject to Part IVA Conservation Act 1987 (affects land formerly Sections 7, 8 & 9 SO 70137)



Godfrey Drive



Section 28
SO 70137

STATE HIGHWAY 1

GRAND DRIVE

ORO LANE

GODFREY DRIVE

DAVEY CRESCENT

1001
6.4747Ha

All lots are subject to Part IVA Conservation Act 1987 (affects land formerly Sections 7, 8 & 9 SO 70137)

T 2/11

Land District: North Auckland

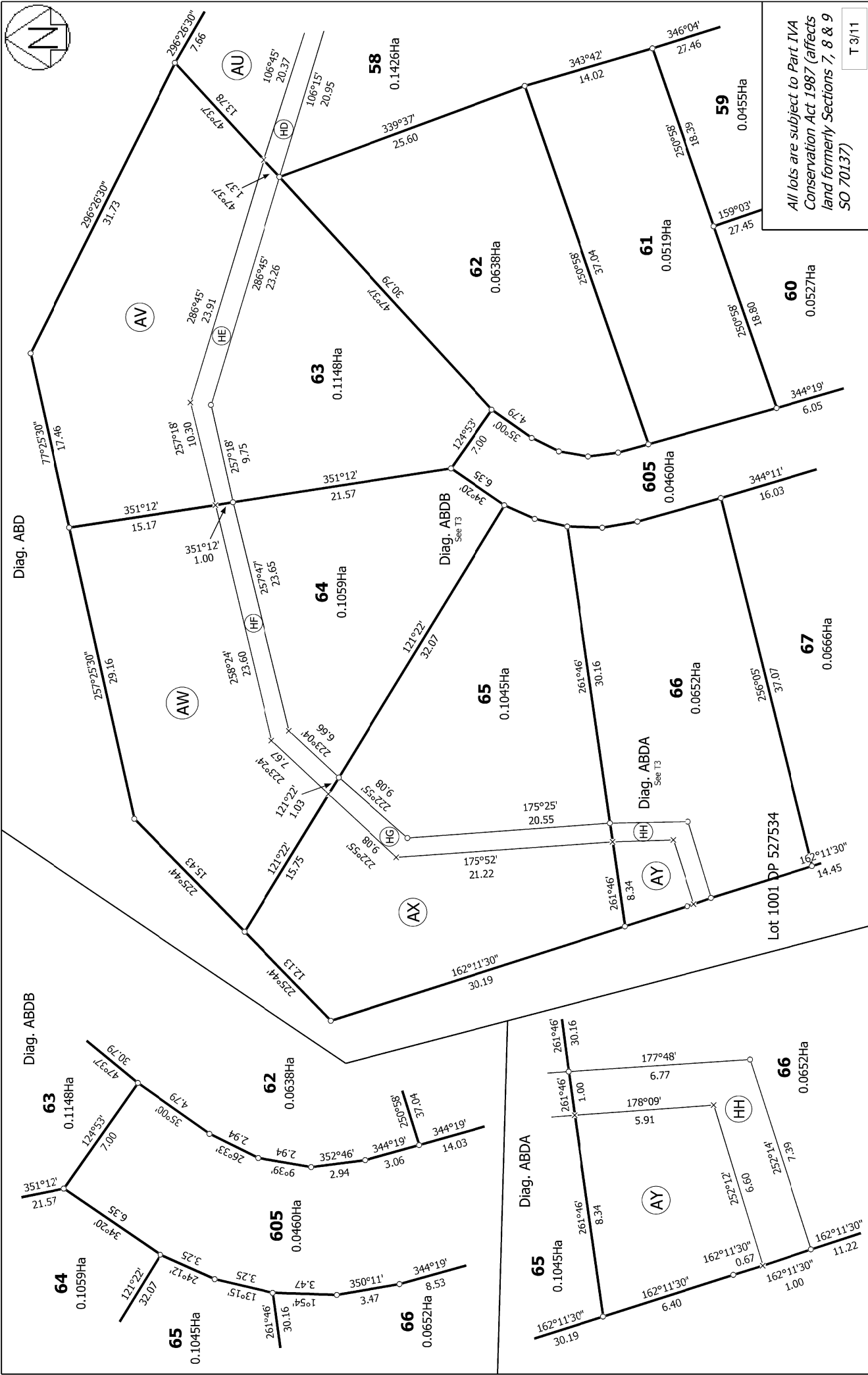
Digitally Generated Plan

Generated on: 08/11/2019 10:11 am Page 6 of 15

Lots 54-78, 174-195, 604-605, 802-803, 904 & 1001 Being a Subdivision of Lot 1001 DP 534851

Surveyor: Kendall Lisa Reid
Firm: Wood & Partners Consultants Ltd

Title Plan
LT 542496
DRAFT



All lots are subject to Part IVA Conservation Act 1987 (affects land formerly Sections 7, 8 & 9 SO 70137)

T 3/11

Title Plan
LT 542496
DRAFT

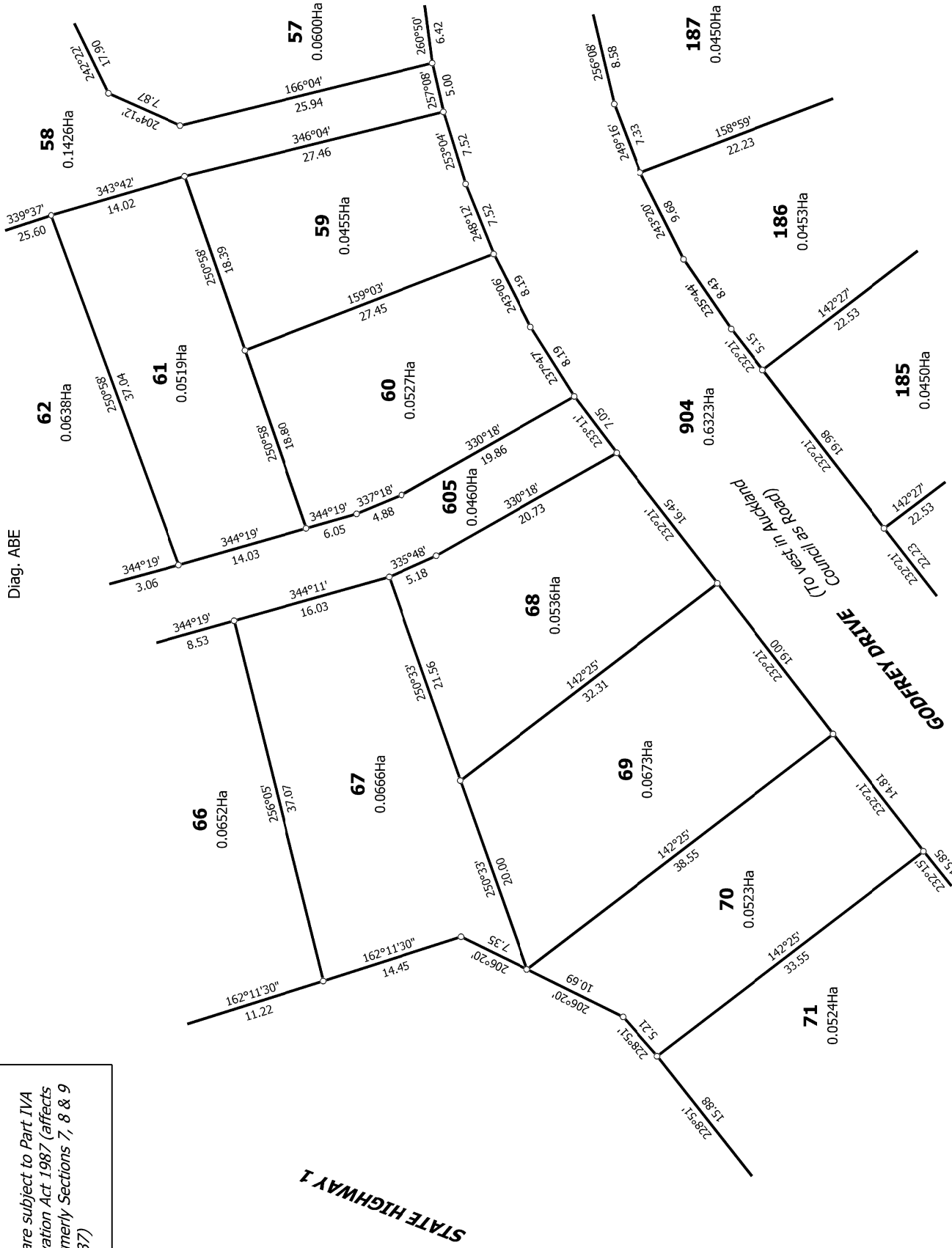
Surveyor: Kendall Lisa Reid
Firm: Wood & Partners Consultants Ltd

Lots 54-78, 174-195, 604-605, 802-803, 904 & 1001 Being a Subdivision of Lot 1001 DP 534851

Land District: North Auckland
Digitally Generated Plan
Generated on: 08/11/2019 10:11 am | Page 7 of 15



Diag. ABE



T 4/11

All lots are subject to Part IVA Conservation Act 1987 (affects land formerly Sections 7, 8 & 9 SO 70137)

Title Plan
LT 542496
DRAFT

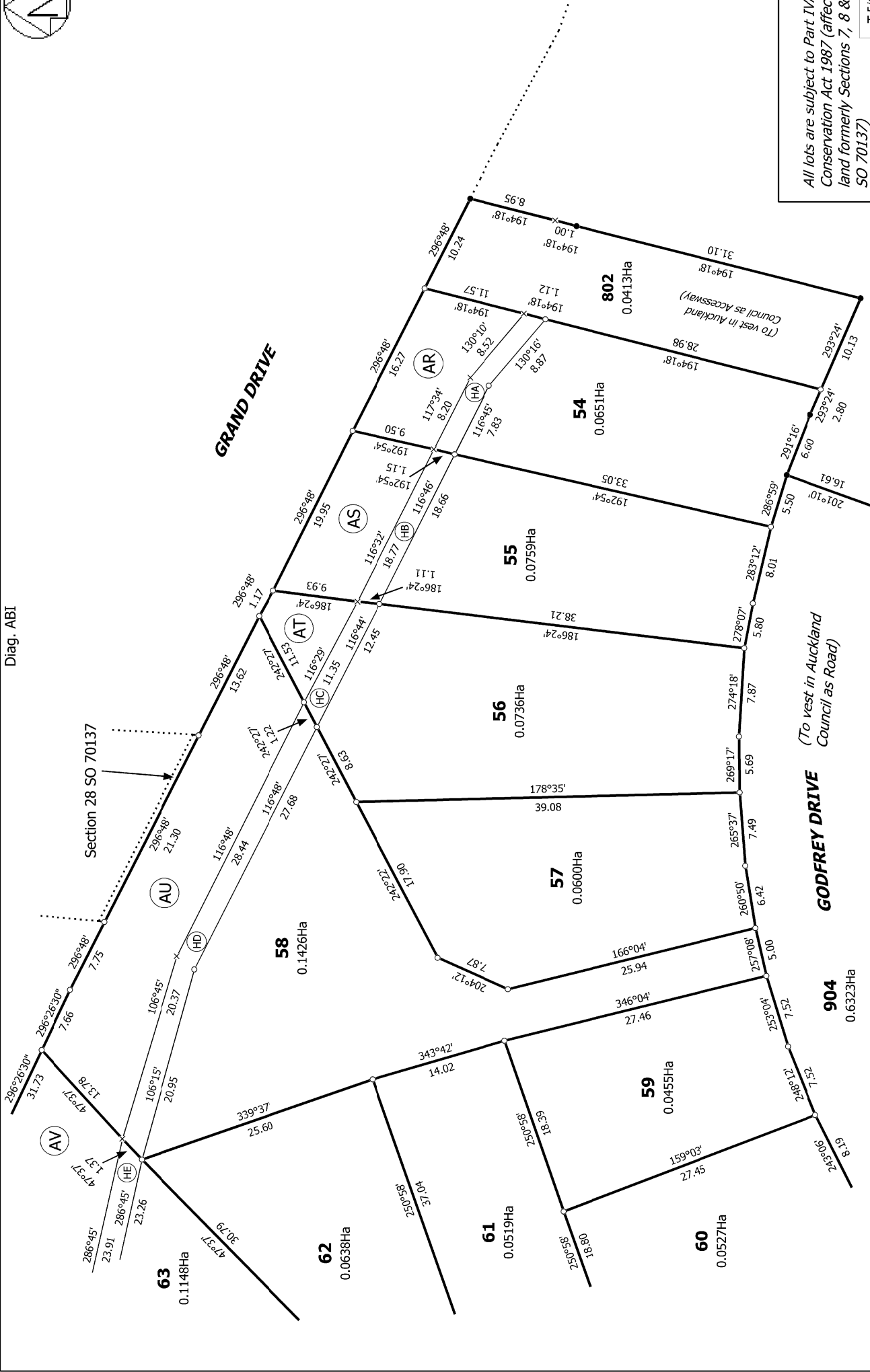
Surveyor: Kendall Lisa Reid
Firm: Wood & Partners Consultants Ltd

Lots 54-78, 174-195, 604-605, 802-803, 904 & 1001 Being a Subdivision of Lot 1001 DP 534851

Land District: North Auckland
Digitally Generated Plan
Generated on: 08/11/2019 10:11 am Page 8 of 15



Diag. ABI



All lots are subject to Part IVA
 Conservation Act 1987 (affects
 land formerly Sections 7, 8 & 9
 SO 70137)

T 5/11

Land District: North Auckland

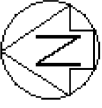
Digitally Generated Plan

Generated on: 08/11/2019 10:11am Page 9 of 15

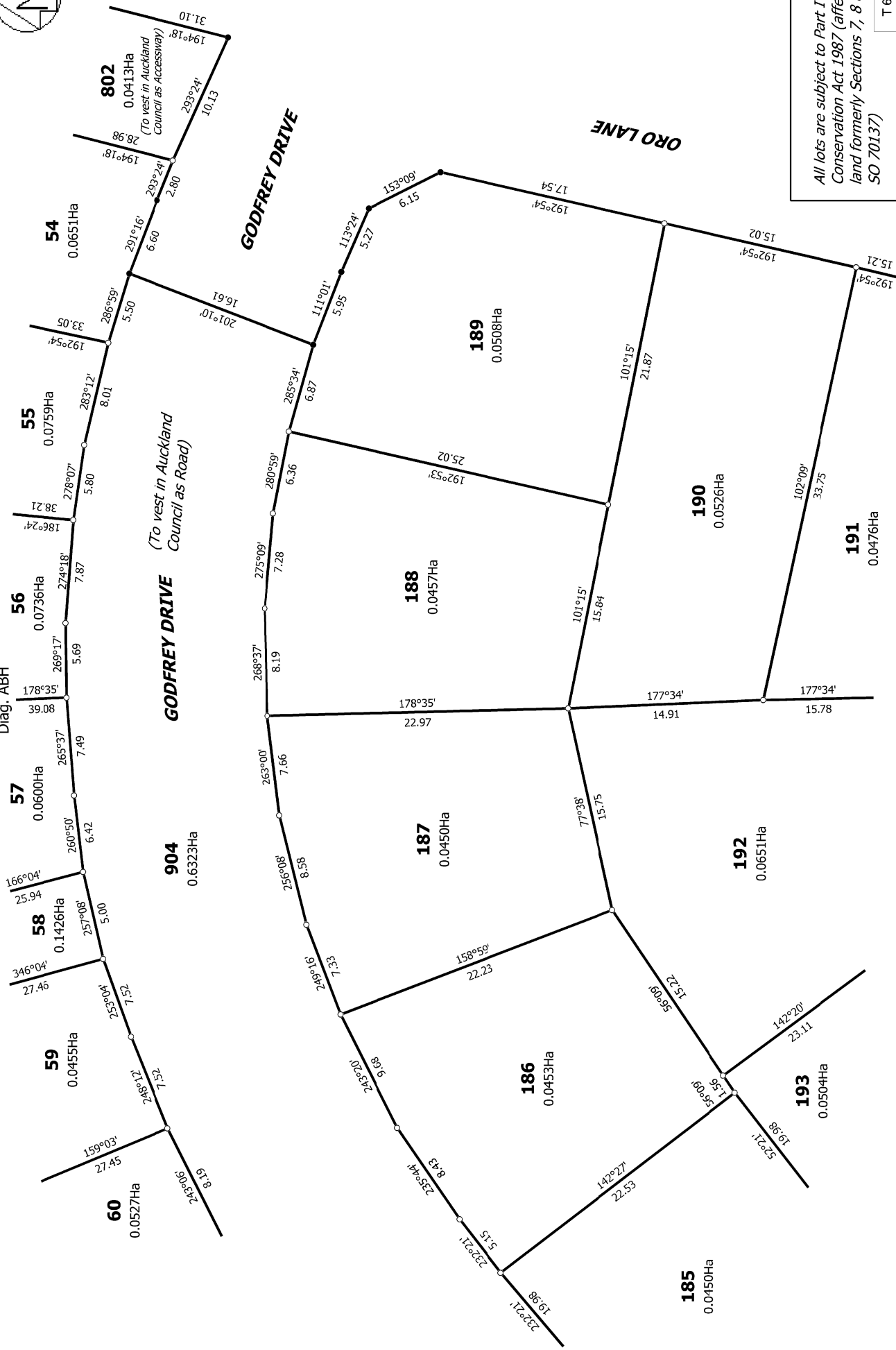
Lots 54-78, 174-195, 604-605, 802-803, 904 & 1001 Being a Subdivision of Lot 1001 DP 534851

Surveyor: Kendall Lisa Reid
 Firm: Wood & Partners Consultants Ltd

Title Plan
 LT 542496
 DRAFT



Diag. ABH



All lots are subject to Part IVA Conservation Act 1987 (affects land formerly Sections 7, 8 & 9 SO 70137)

T 6/11

Land District: North Auckland

Digitally Generated Plan

Generated on: 08/11/2019 10:11am Page 10 of 15

Lots 54-78, 174-195, 604-605, 802-803, 904 & 1001 Being a Subdivision of Lot 1001 DP 534851

Surveyor: Kendall Lisa Reid
Firm: Wood & Partners Consultants Ltd

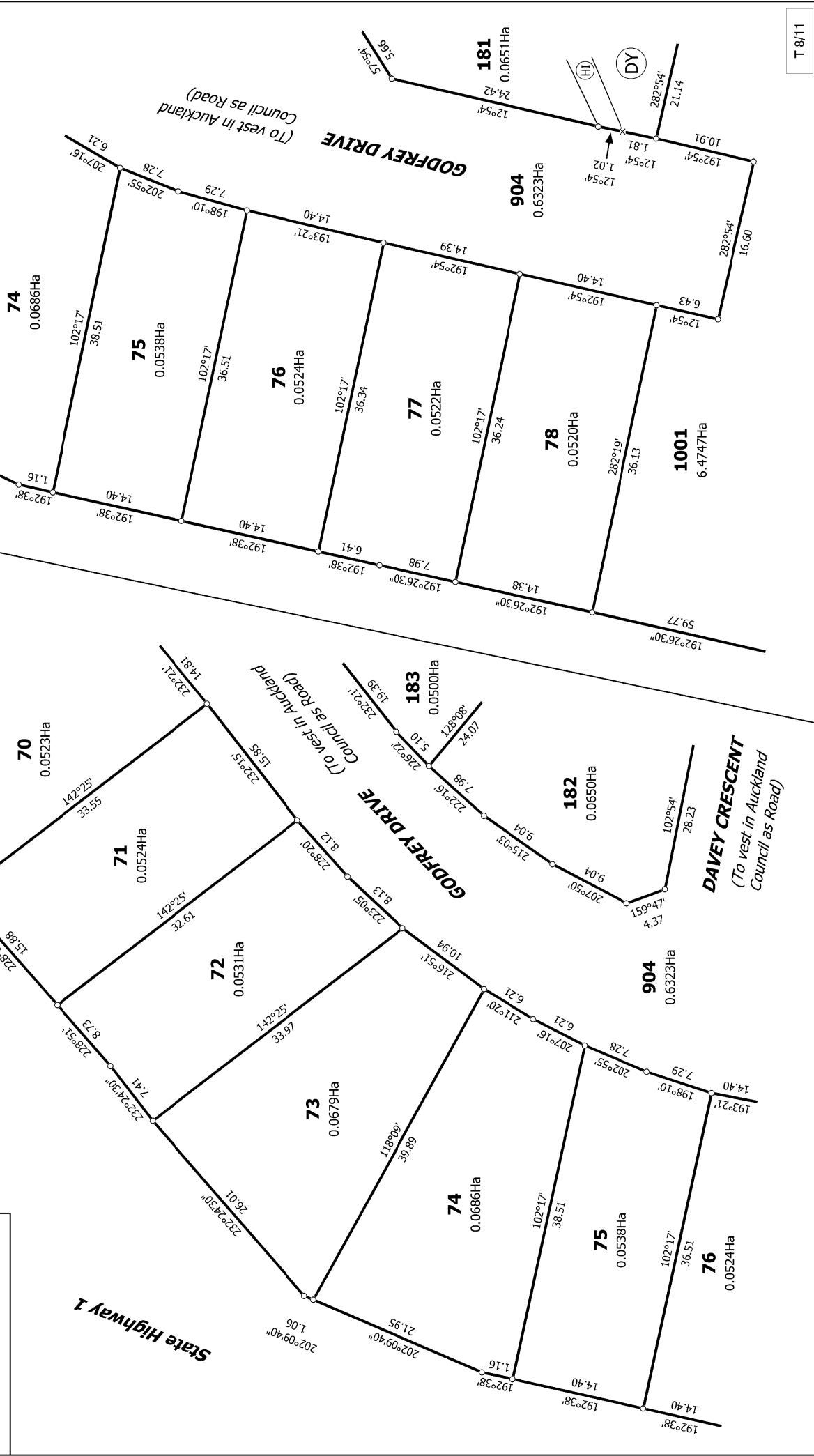
Title Plan
LT 542496
DRAFT



All lots are subject to Part IVA Conservation Act 1987 (affects land formerly Sections 7, 8 & 9 SO 70137)

Diag. ABA

Diag. ABB



T 8/11

<p>Land District: North Auckland</p> <p>Digitally Generated Plan</p> <p>Generated on: 08/11/2019 10:11 am Page 12 of 15</p>	<p>Lots 54-78, 174-195, 604-605, 802-803, 904 & 1001 Being a Subdivision of Lot 1001 DP 534851</p>	<p>Surveyor: Kendall Lisa Reid Firm: Wood & Partners Consultants Ltd</p>	<p>Title Plan LT 542496 DRAFT</p>
--	--	--	---



Diag. ABG

803
0.2999Ha
102°54' 67.56
237°41' 5.66

ORO LANE

DAVEY CRESCENT

DAVEY CRESCENT
(To vest in Auckland Council as Road)

904
0.6323Ha
102°54' 15.97
102°54' 15.97

178
0.0499Ha
282°54' 15.97
192°46' 1.00
282°54' 15.97

177
0.0499Ha
192°46' 1.00
282°54' 15.97
282°54' 15.97

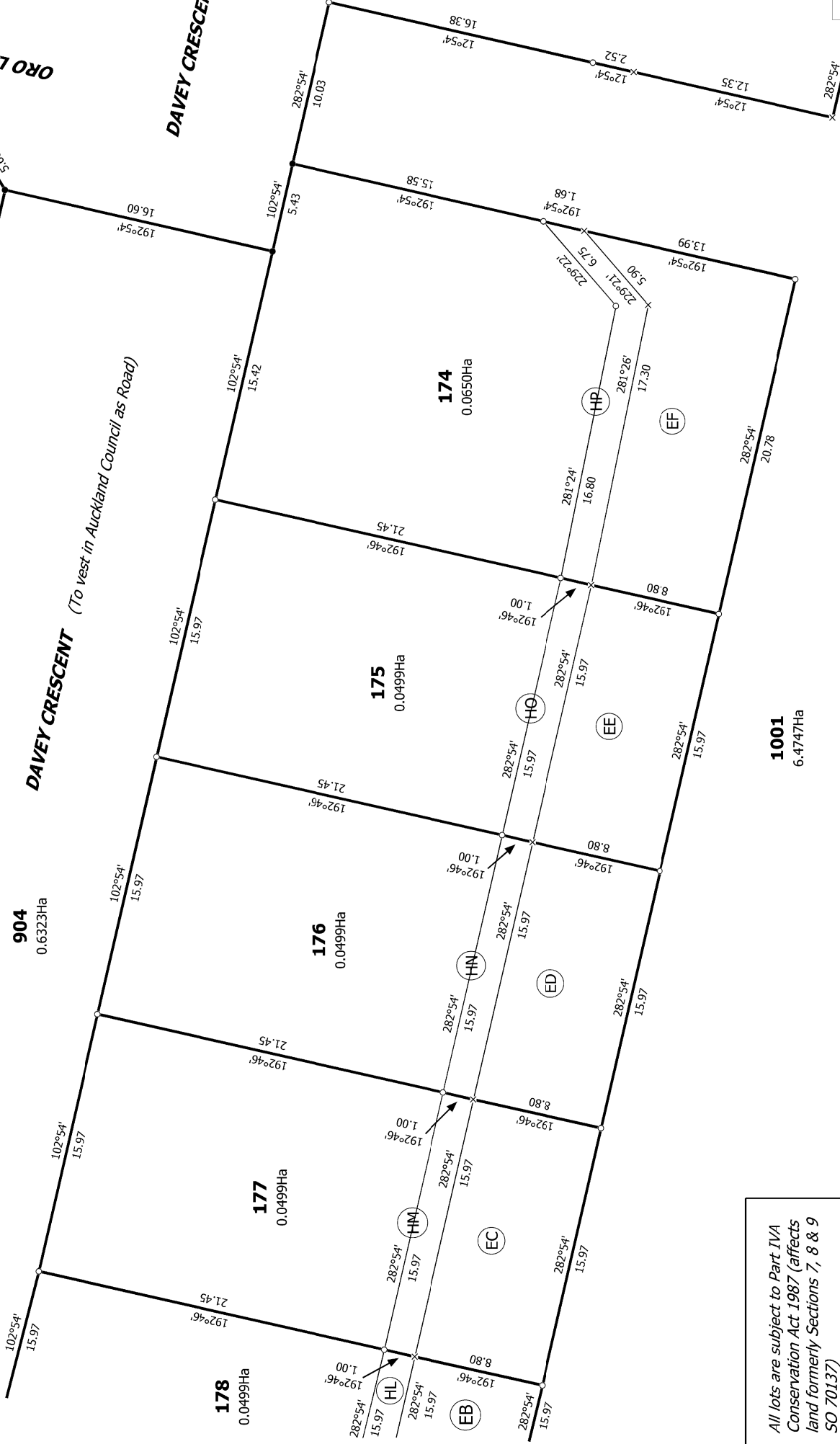
176
0.0499Ha
192°46' 1.00
282°54' 15.97
282°54' 15.97

175
0.0499Ha
192°46' 1.00
282°54' 15.97
282°54' 15.97

174
0.0650Ha
192°46' 1.00
282°54' 15.97
282°54' 15.97

1001
6.4747Ha
282°54' 15.97
282°54' 15.97
282°54' 15.97

*All lots are subject to Part IVA
Conservation Act 1987 (affects
land formerly Sections 7, 8 & 9
SO 70137)*



T 10/11

Land District: North Auckland

Lots 54-78, 174-195, 604-605, 802-803, 904 & 1001 Being a Subdivision of Lot
1001 DP 534851

Surveyor: Kendall Lisa Reid
Firm: Wood & Partners Consultants Ltd

Title Plan
LT 542496

DRAFT

Digitally Generated Plan

Generated on: 08/11/2019 10:11 am Page 14 of 15



Diag. AC

Grover Street

Marginal Strip HH

1001
6.4747Ha

1001
6.4747Ha

Diag. AA

Marginal Strip HH

Left Bank

All lots are subject to Part IVA
Conservation Act 1987 (affects
land formerly Sections 7, 8 & 9
SO 70137)

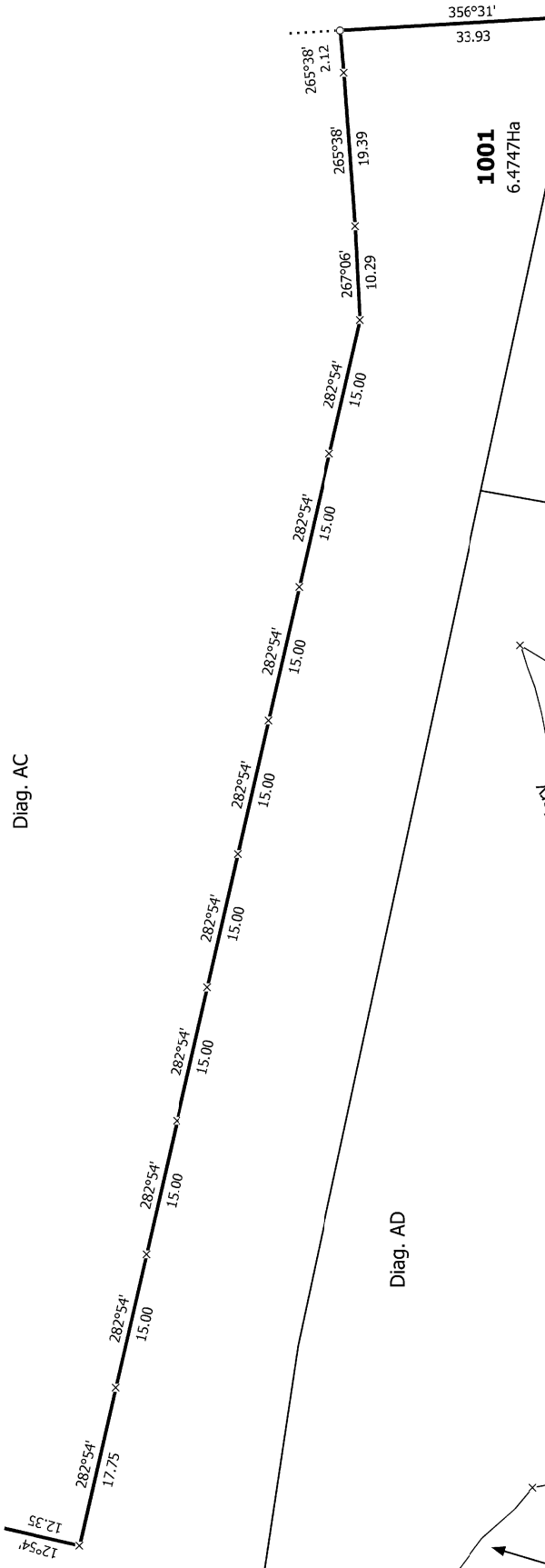
T 11/11

Title Plan
LT 542496
DRAFT

Surveyor: Kendall Lisa Reid
Firm: Wood & Partners Consultants Ltd

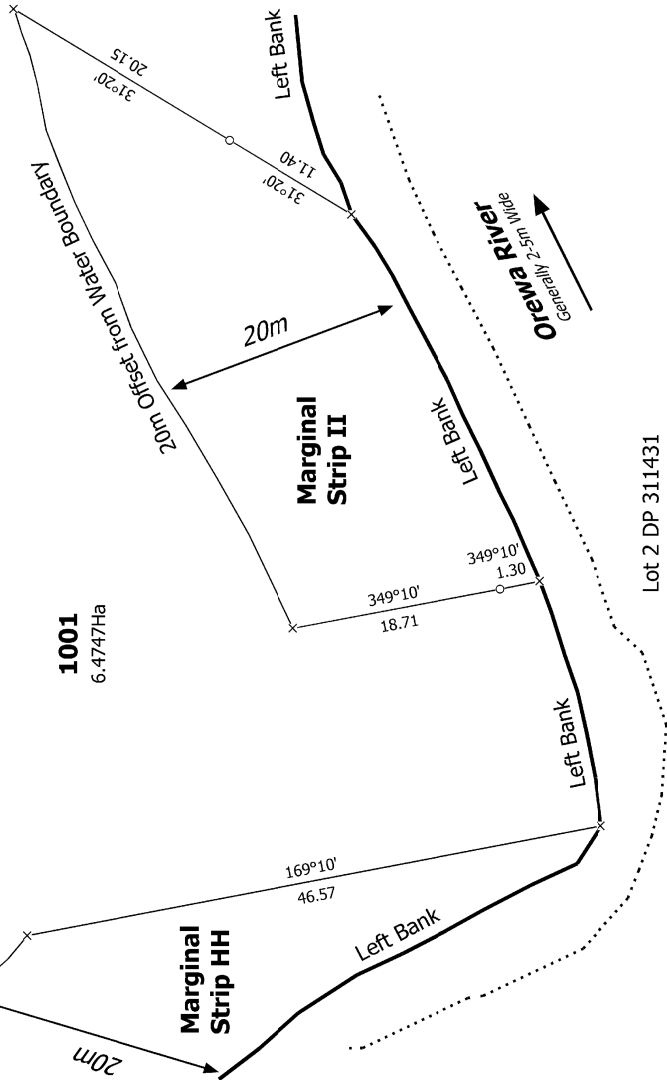
Lots 54-78, 174-195, 604-605, 802-803, 904 & 1001 Being a Subdivision of Lot
1001 DP 534851

Land District: North Auckland
Digitally Generated Plan
Generated on: 08/11/2019 10:11 am Page 15 of 15



Diag. AD

1001
6.4747Ha



Lot 2 DP 311431